



## iM2500

### Storm Carry-On Case

The Pelican™ Storm Case™ has the same legendary DNA as our Pelican Protector Case, with one primary difference: A unique Press and Pull latch that locks automatically, but open with a light touch. Guaranteed for life, the Pelican Storm case is made in the USA and engineered using the finest components.

- Two Press & Pull Latches
- Guaranteed for life
- **Watertight\*, crushproof, and dustproof**
- Vortex® Valve
- Double-layered, Soft-grip Handle
- Powerful Hinges
- Lightweight Strong HPX® Resin
- Two Padlockable Hasps



### CONFIGURATIONS



**iM2500**  
Standard



**iM2500-X0000**  
No Foam



**iM2500-X0002**  
With Padded Dividers



**iM2500-X0006**  
With TrekPak Divider System

### DIMENSIONS

<b>Interior (L x W x D)</b>	20.50 x 11.50" x 7.20 (52.1 x 29.2 x 18.3 cm)
<b>Exterior (L x W x D)</b>	21.70 x 14.10" x 8.90 (55.1 x 35.8 x 22.6 cm)
<b>Lid Depth</b>	2.00" (5.1 cm)
<b>Bottom Depth</b>	5.20" (13.2 cm)
<b>Total Depth</b>	7.2" (18.3 cm)
<b>Int Volume</b>	0.98 ft³ (0.028 m³)

### MATERIALS

<b>Body</b>	Injection Molded HPX® high performance resin
<b>Latch</b>	Valox - Polybutylene Terephthalate (PBT)
<b>Latch (Alt)</b>	Xenoy - Polyester/Polycarbonate blend
<b>O-Ring</b>	EPDM
<b>Pins</b>	Stainless Steel
<b>Pins (Alt)</b>	Aluminum
<b>Foam</b>	1.3/1.35 polyester
<b>Purge Body</b>	Valox - Polybutylene Terephthalate (PBT)
<b>Purge Body (Alt)</b>	Xenoy - Polyester/Polycarbonate blend
<b>Purge Vent</b>	Gortex membrane

### COLOURS

<span style="display: inline-block; width: 15px; height: 15px; background-color: black; margin-right: 5px;"></span> Black	<span style="display: inline-block; width: 15px; height: 15px; background-color: yellow; margin-right: 5px;"></span> Yellow	<span style="display: inline-block; width: 15px; height: 15px; background-color: #556b2f; margin-right: 5px;"></span> OD Green
---	---	--

### WEIGHT

<b>Weight With Foam</b>	13.70 lbs (6.2 kg)
<b>Weight Empty</b>	11.10 lbs (5 kg)
<b>Buoyancy</b>	62.56 lbs (28.4 kg)
<b>Master Pack Weight</b>	42.10 lbs (19.1 kg)

**TEMPERATURE**

<b>Minimum Temperature</b>	-20°
<b>Maximum Temperature</b>	140°

**CERTIFICATIONS**

MIL-STD-810F  
ATA 300  
FED-STD-101C

**FOAM PROPERTIES**

<b>Layer 1 (Lid)</b>	2.00" Convolute
<b>Layer 2 (Base)</b>	0.50" Pad
<b>Layer 3 (Base)</b>	1.62" Pick N Pluck
<b>Layer 4 (Base)</b>	1.62" Pick N Pluck
<b>Layer 5 (Base)</b>	1.62" Pick N Pluck

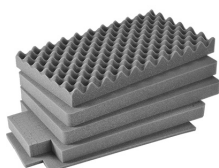
**OTHER**

<b>Extendable Handle</b>	yes
<b>Master Pack</b>	3
<b>Military</b>	yes

**ACCESSORIES**



**iM2500-UTILITYORG**  
Utility Organizer



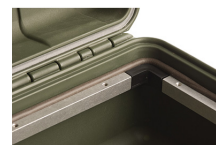
**iM2500-FOAM**  
5 pc. Replacement Foam Set



**iM2500-DIV**  
Padded Divider Set



**iM2500-BEZEL-LID**  
Lid Bezel Kit



**iM2500-BEZEL**  
Base Bezel Kit



**iM-VALVE-M-B**  
Manual Purge Valve



**iM-STRAP-S-VER2**  
Padded Shoulder Strap



**iM-LIDSTAY**  
Lid Stay



3/13 Veronica Street, Capalaba, Brisbane, Qld 4157  
Tel. 07-3245 2699  
Email: sales@qldcase.com.au  
Web: www.qldcase.com.au